

China and the Global Crisis

The Trillion Dollar Club

Washington, DC

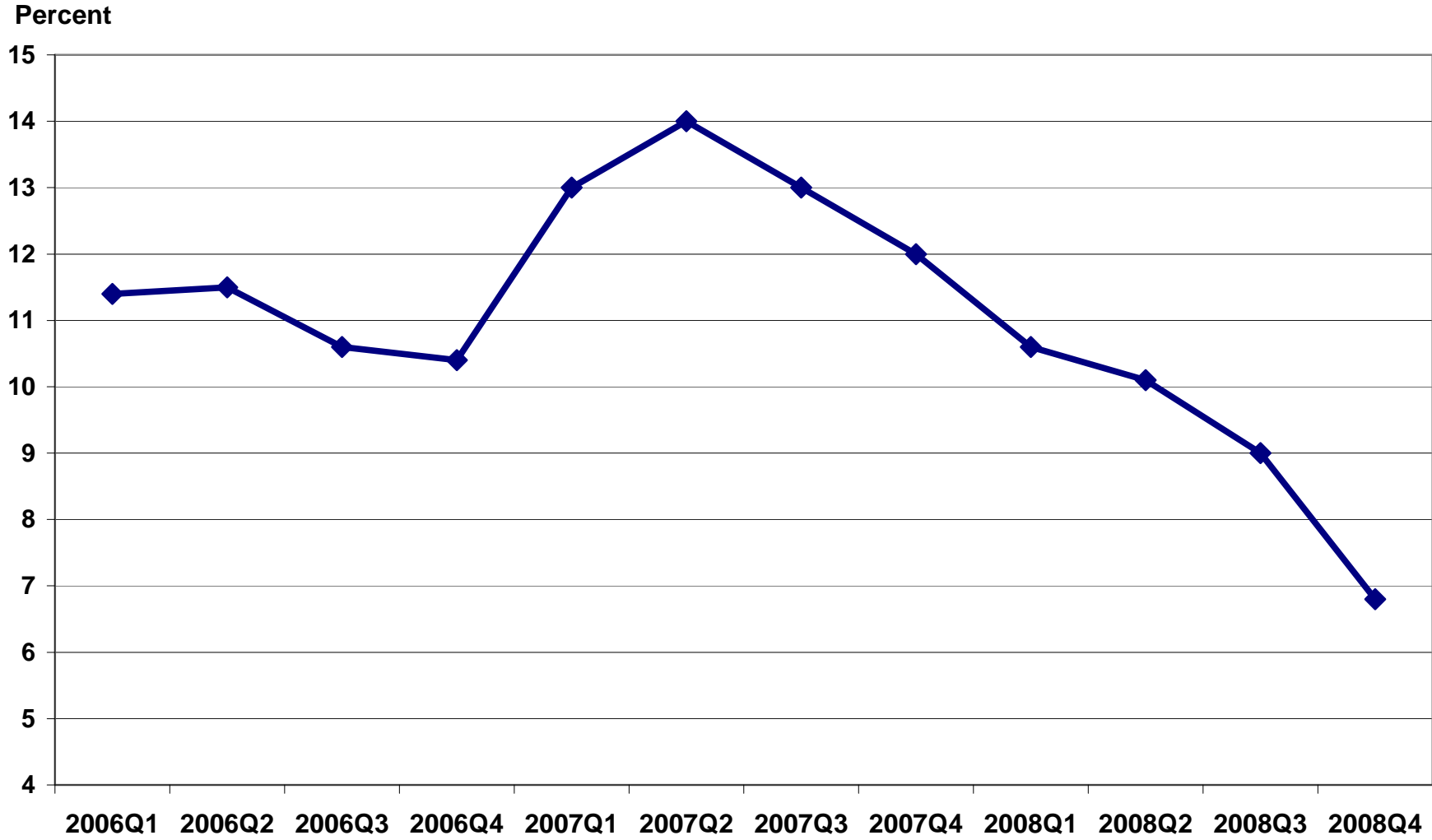
March 10, 2009

Nicholas R. Lardy

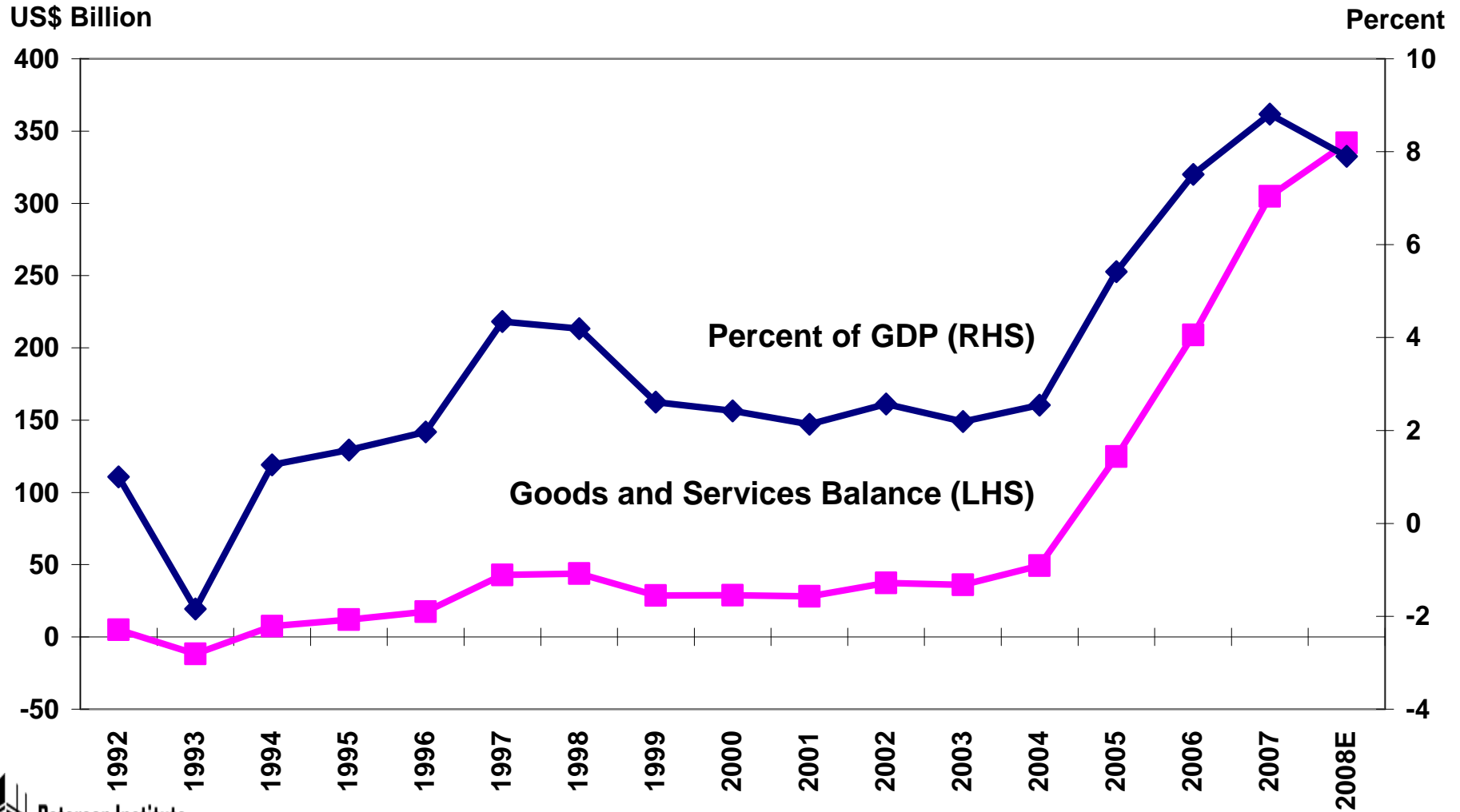
Senior Fellow

Peterson Institute for International Economics

China's Quarterly GDP Growth 2006Q1-2008Q4



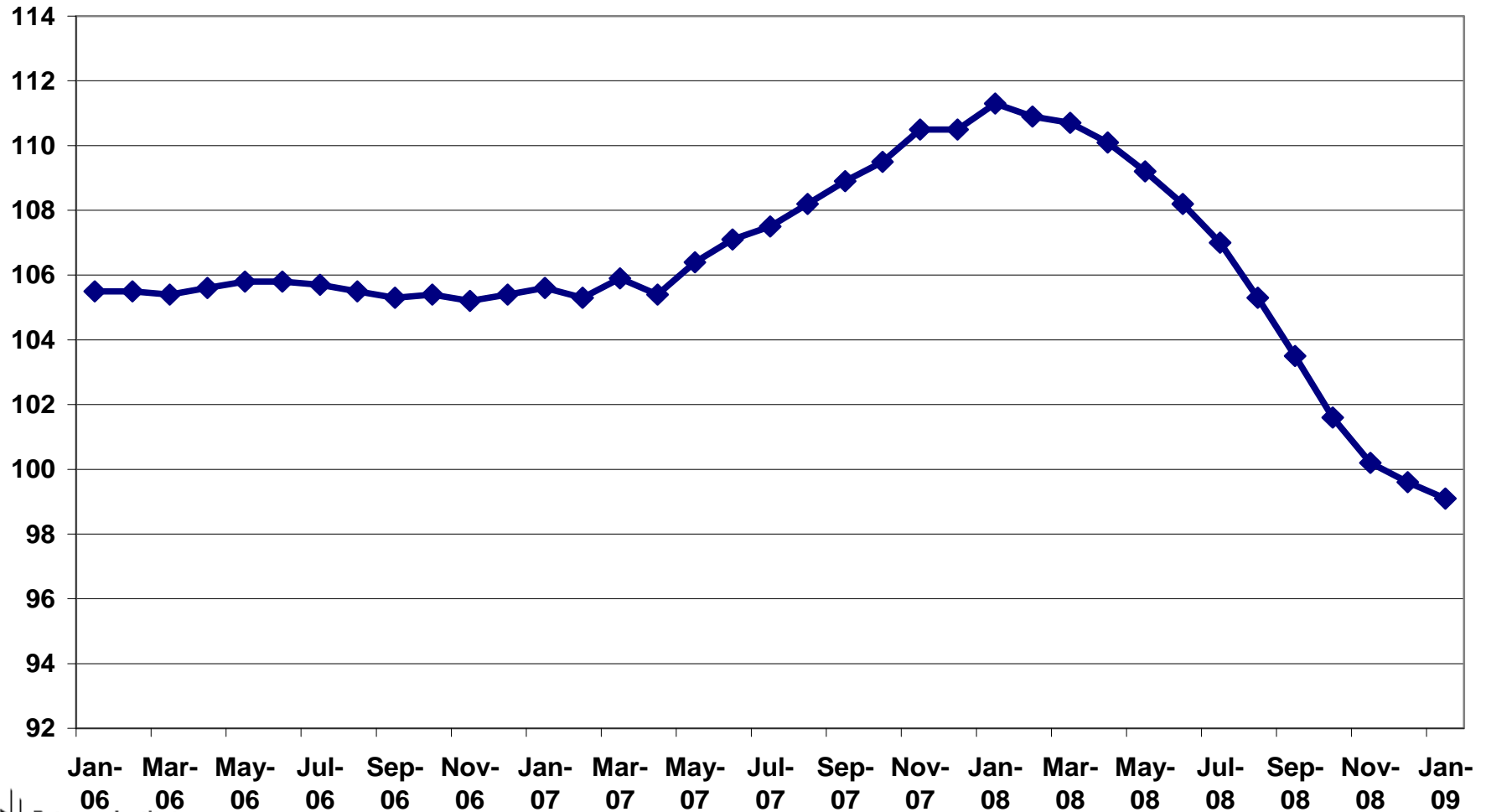
Net Exports of Goods and Services 1992-2008E



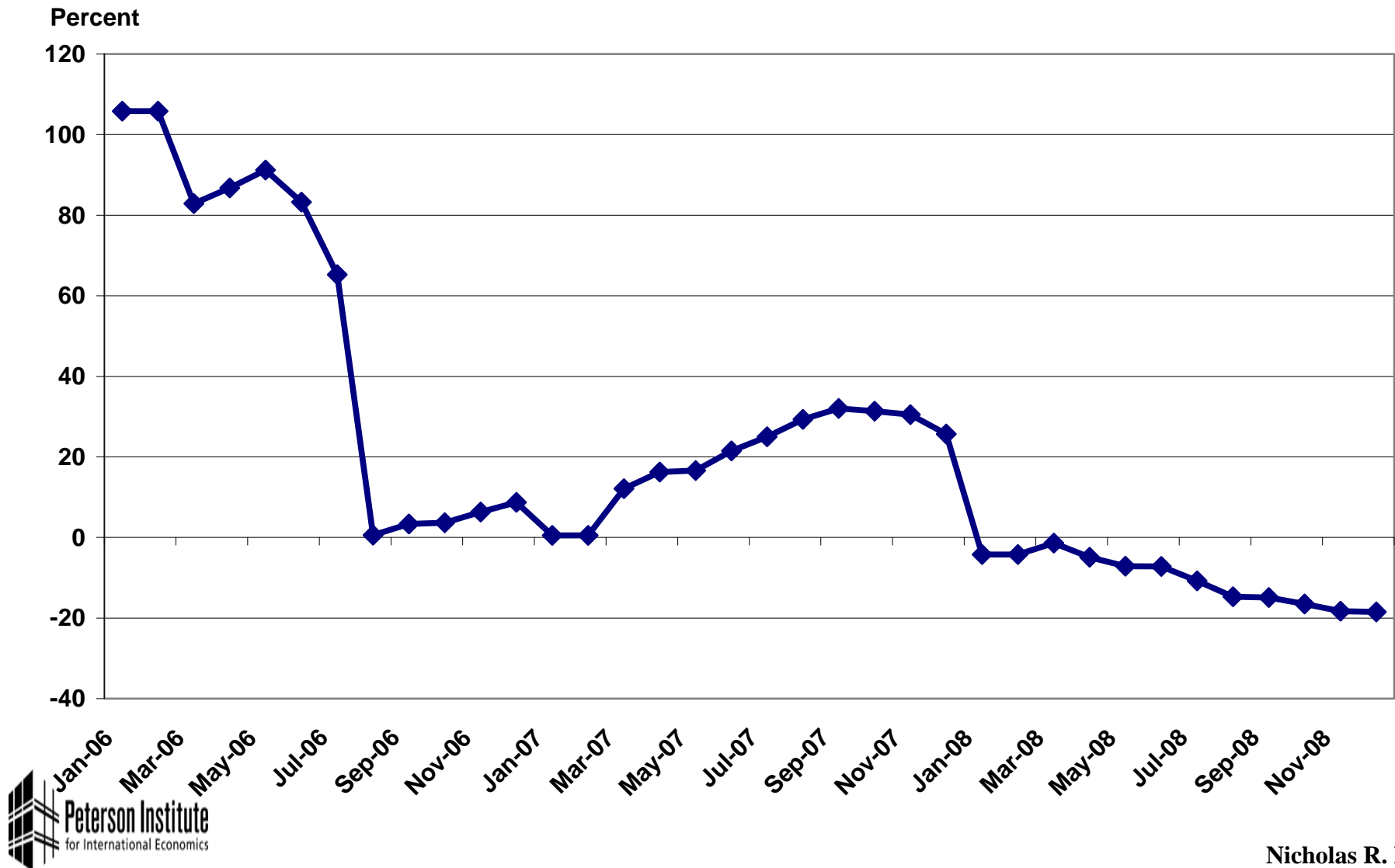
China's Property Price Index

Jan 2006-Jan 2009

PY=100

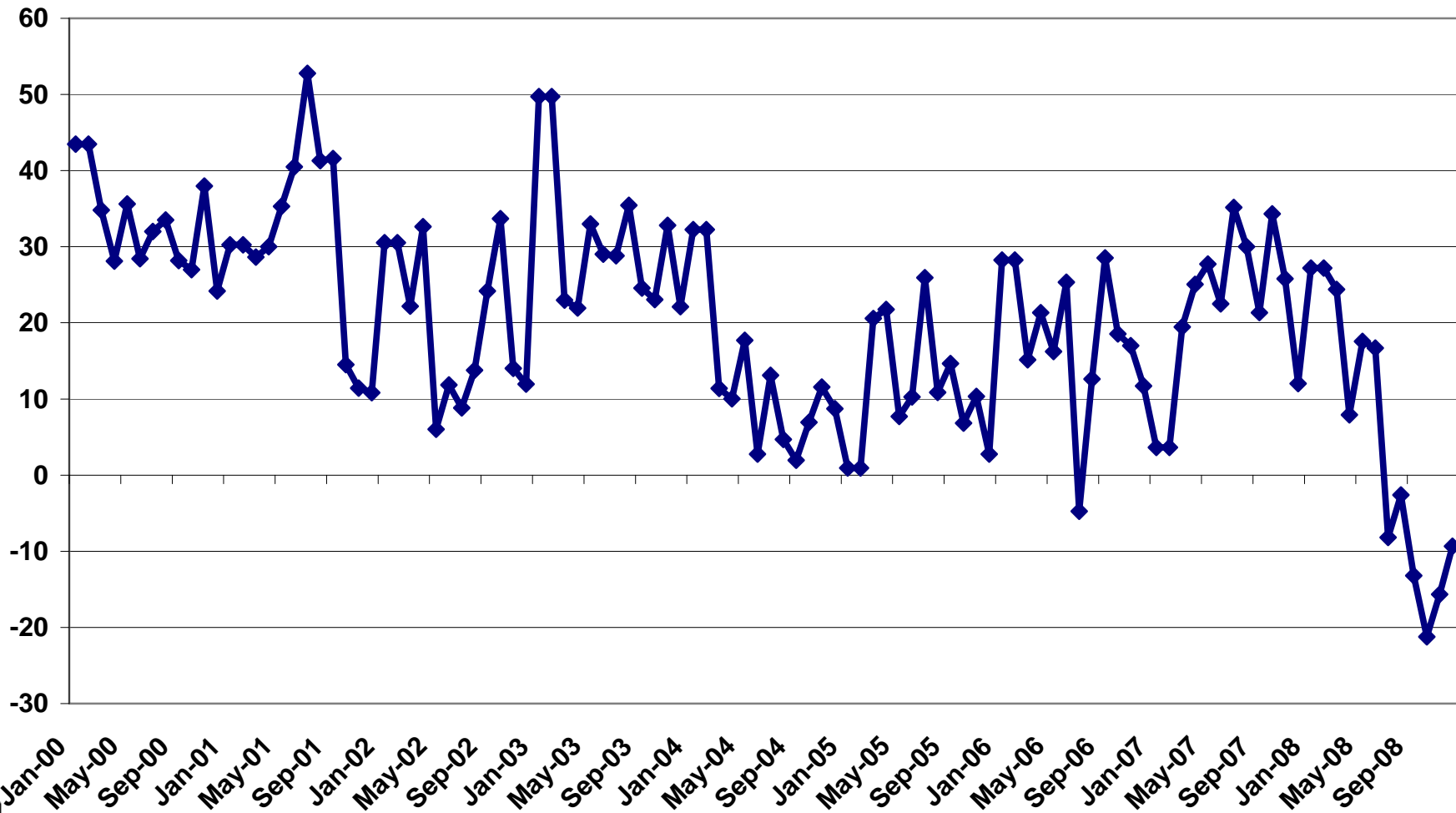


Growth of Floor Space Sold Jan 2006-Dec 2008

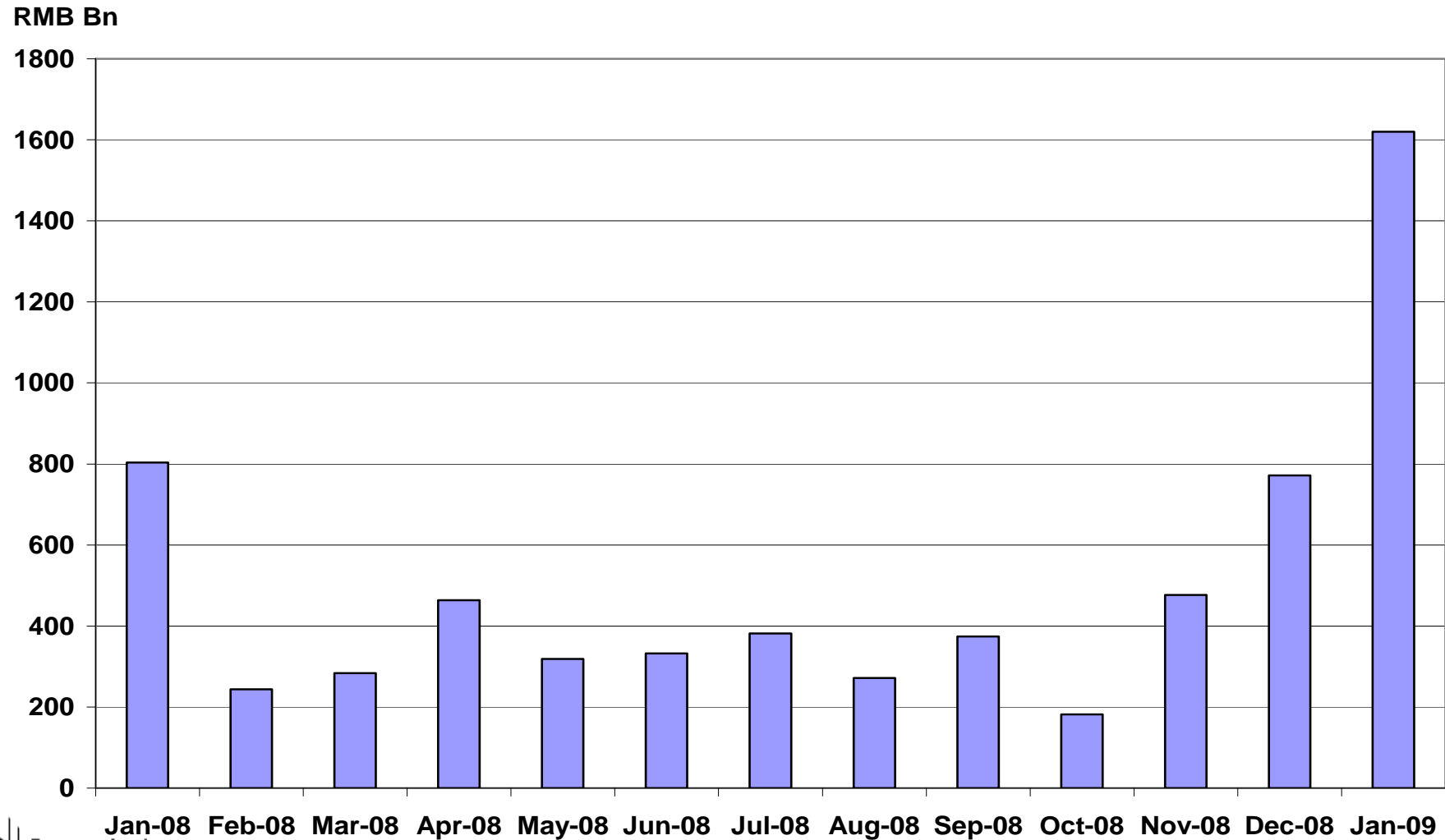


Growth of Floor Space Under Construction Jan 2000-Dec 2008

Percent



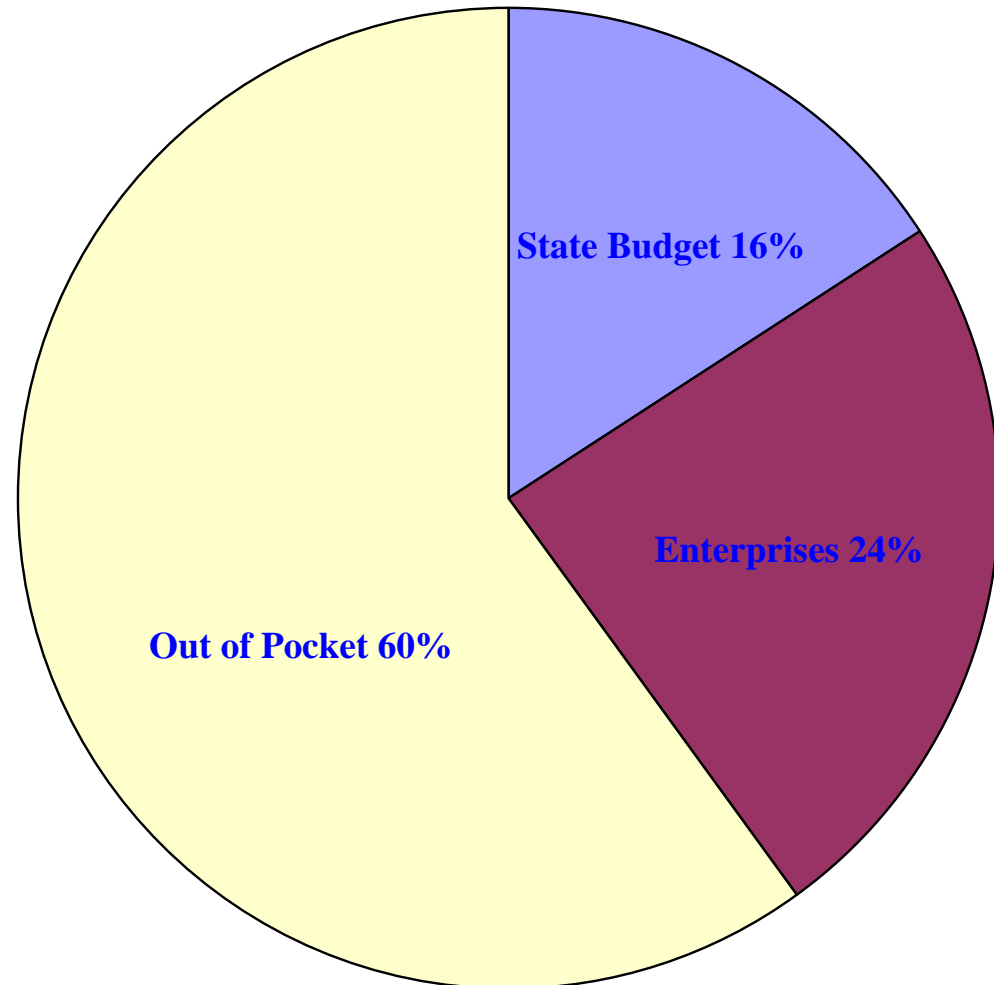
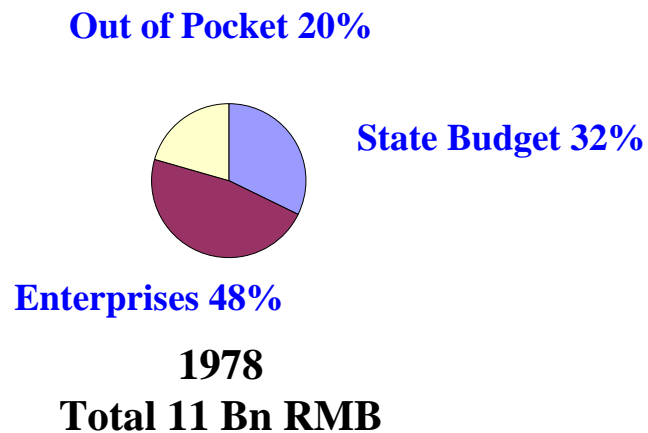
China's Monthly Lending Growth Jan 2008 - Jan 2009



Composition of China's RMB 4 Trillion Stimulus Package

Sector	Amount allocated (RMB Bn)
Transport and power infrastructure (railroads, roads, airports, electricity grids)	1,800
Earthquake reconstruction	1,000
Rural village infrastructure	370
Environmental investment; natural areas	350
Affordable housing	280
Technological innovation	160
Health and education	40
Total	4,000

Who Pays for Health Care in China?

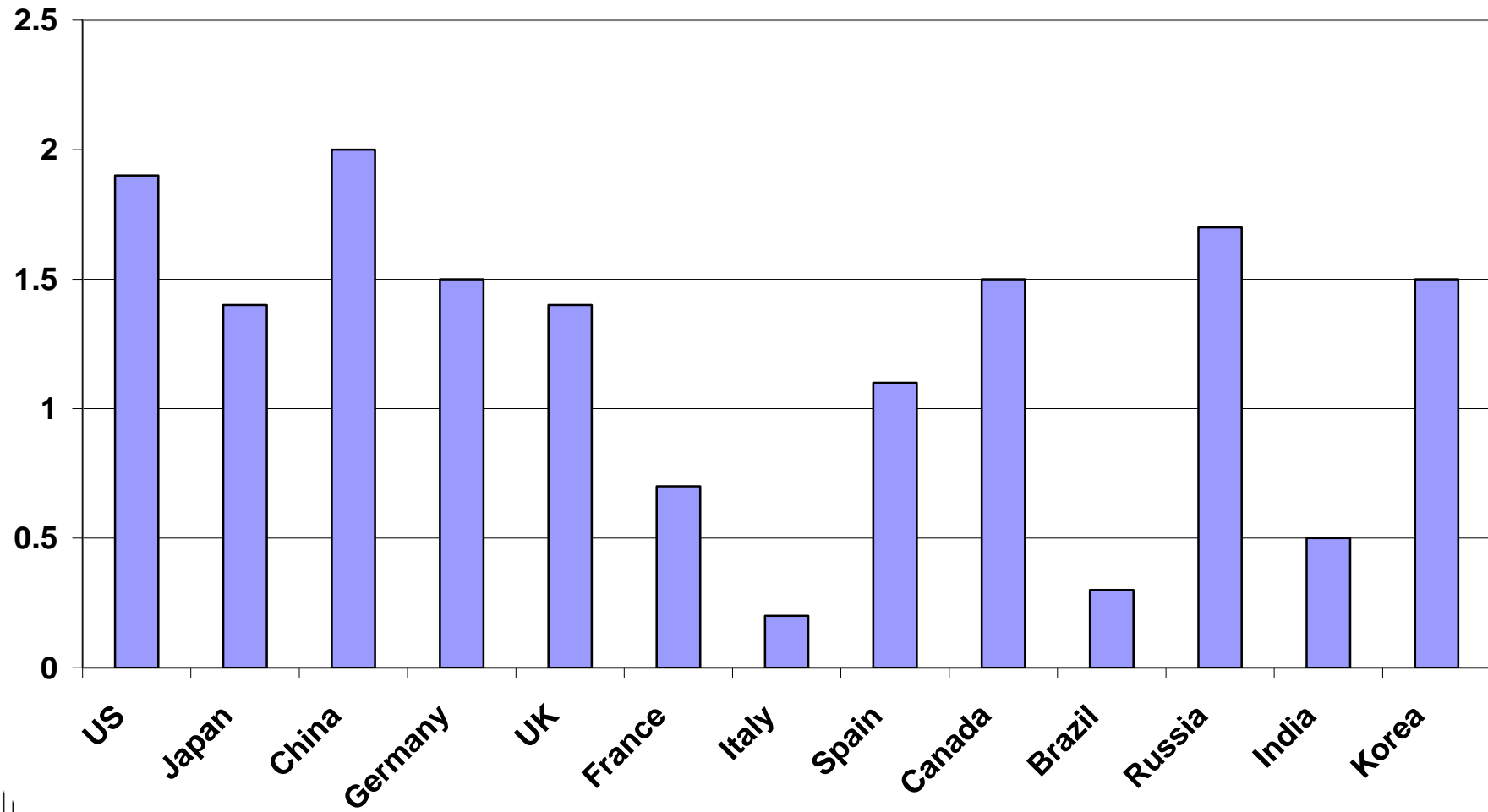


2001
Total 503 Bn RMB

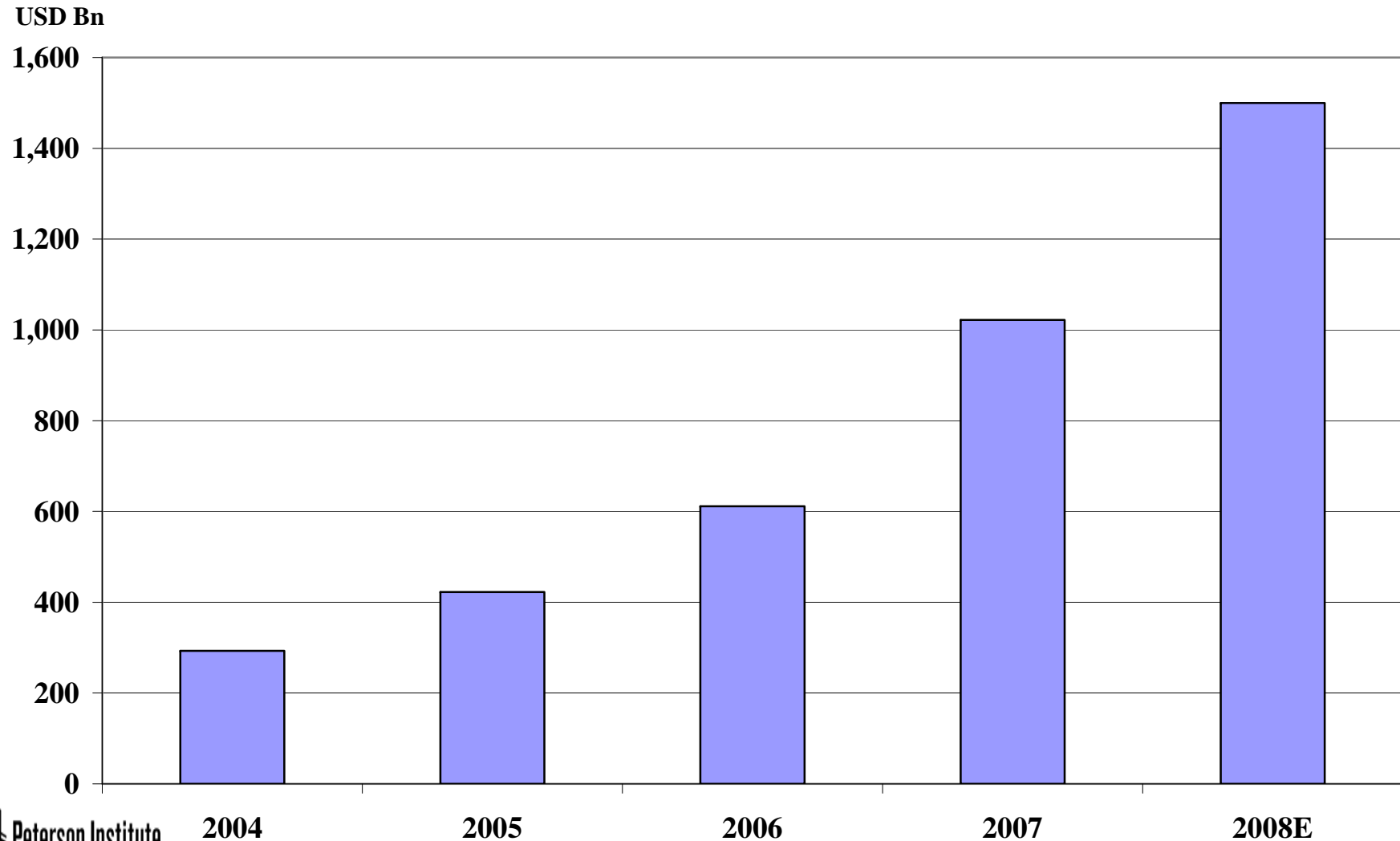
Nicholas R. Lardy

Estimated Size of Stimulus Packages 2009

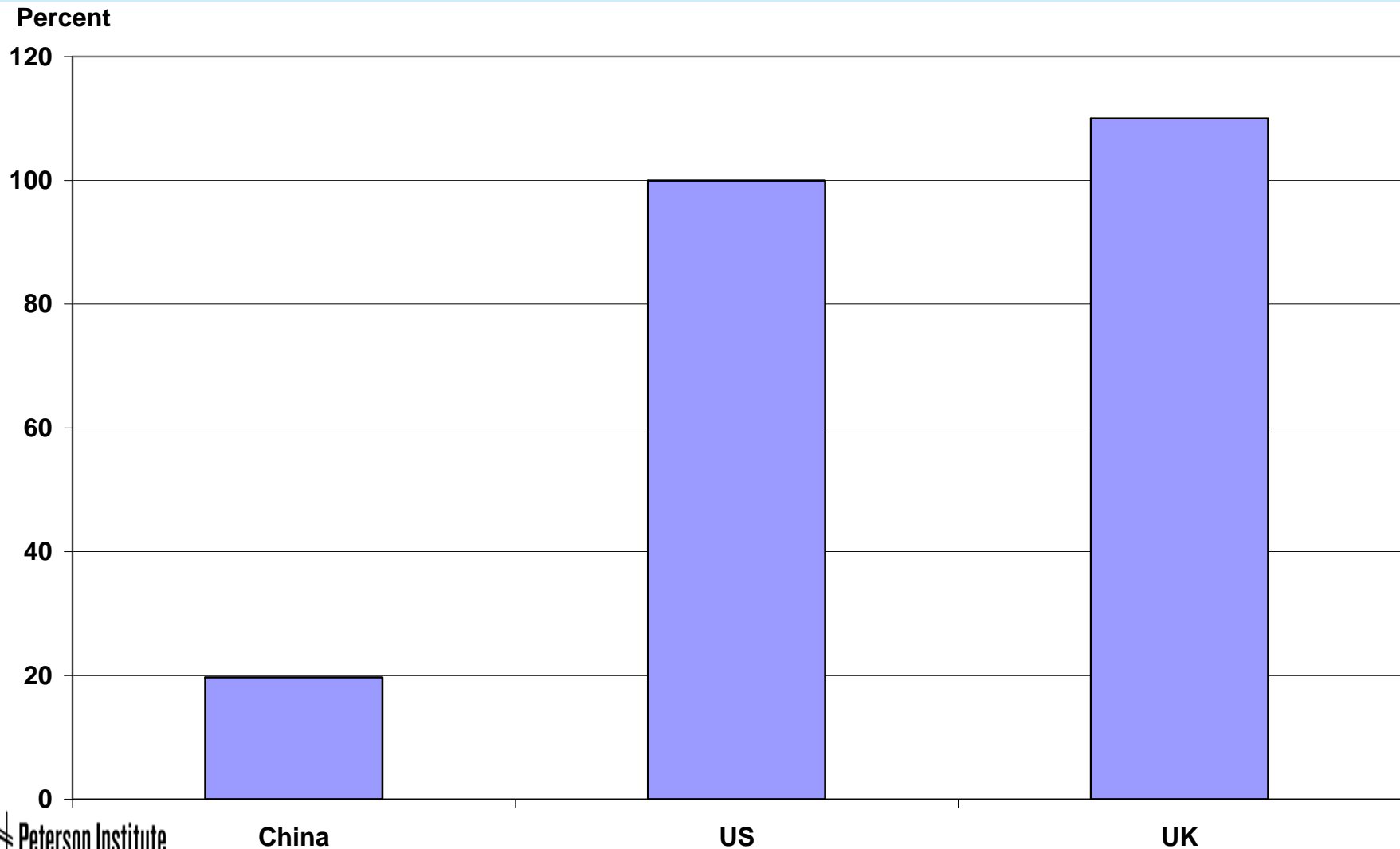
Percent of GDP



China's Net Foreign Investment Position 2004 – 2008E

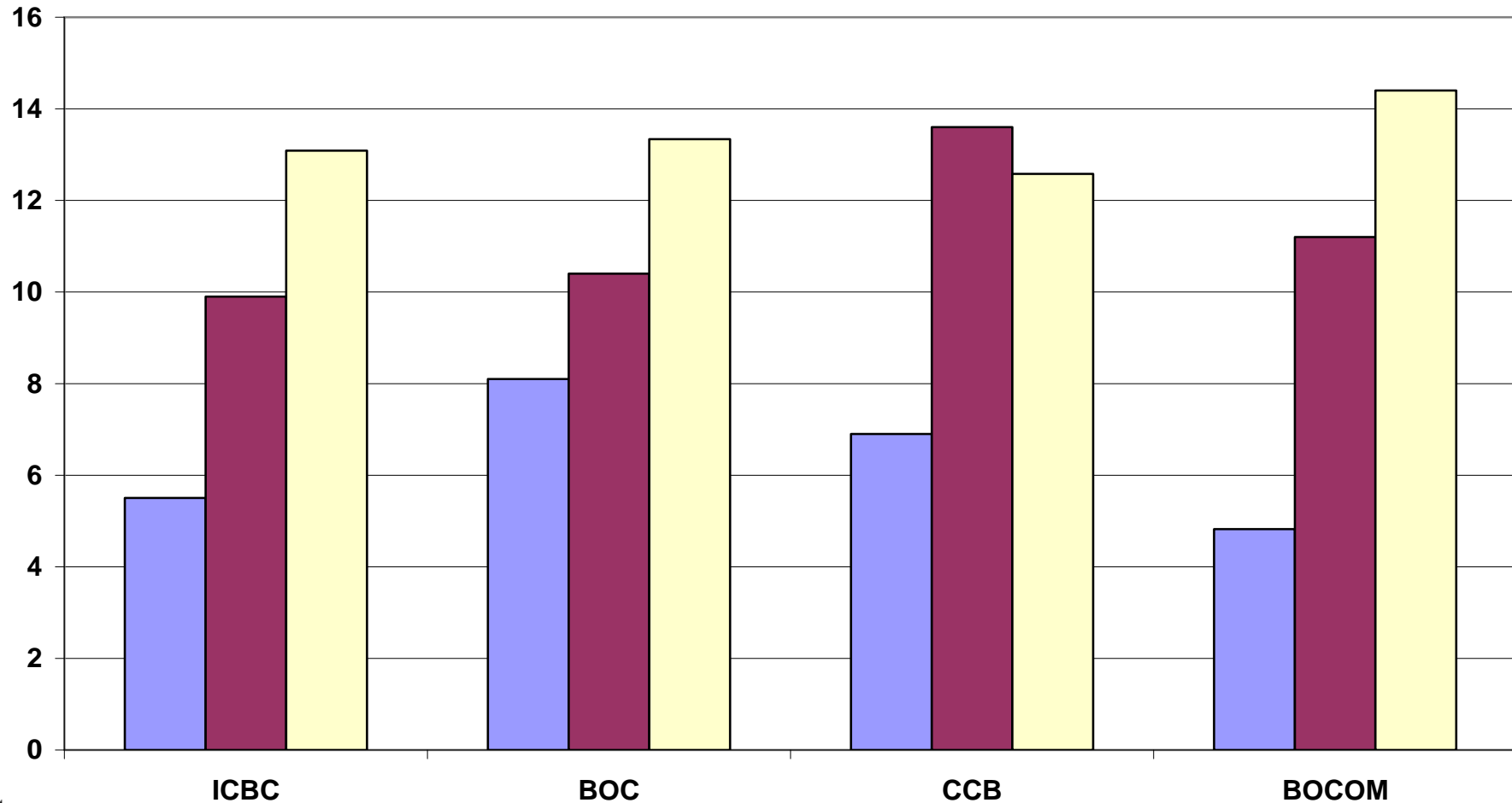


Household Debt as Percent of GDP, 2007



Capital Adequacy Ratio of Chinese Banks 2002-2007

Percent



Public Debt 2007

Percent of GDP

